



Comfortable, healthy and  
safe indoor climate for living,  
working and leisure



## Five reasons for choosing Climecon's ventilation products

### + Quality

Ventilation solutions have to work reliably, last long and require minimal maintenance. Therefore, the products' quality, both what goes to the materials and manufacturing process, is extremely important to us. The high quality of our products comes as a result of years of experience, dedication to our goals and continuous investment in product development.

### + Features

The most essential things in the design, development and manufacture of our products are the ventilation solutions' air and sound properties as well as performance. Indeed, these are the factors that we seek to improve through our continuous product development in cooperation with the industry's leading actors such as VTT Technical Research Centre Finland.

### + Design

It is important for us that our technically high-quality products also look good. Our products have been designed in such a way that they fit perfectly the interior design of homes, work and public spaces.

### + Innovation

New developments in technology mean more opportunities for us to improve our products. We have a passion to always do things better and to continuously develop new solutions. This passion has also brought results: we are able to continuously introduce new innovative products to the market. Therefore we are investing a substantial portion of our revenue in research and development.

### + Usability

Our products are designed in cooperation with the industry's professionals and for professionals. Therefore, their installation, operation and the little maintenance they need are designed to be as easy as possible.

Complete and up-to-date product documentation can be found at [www.climecon.fi](http://www.climecon.fi)

All terminals, hoods and rooftop ventilation systems can be found extensively in MagiCAD design software databases.

## SUPPLY AIR VALVES



**RINO**  
 Ø 100–160  
 5–50 dm³/s  
 Surface mounting  
 on wall



**CLIK**  
 Ø 100–125  
 5–22 dm³/s  
 Surface and  
 flush mounting



**FINO**  
 Ø 160  
 5–23 dm³/s  
 Flush mounting



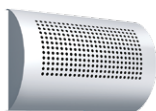
**TINO**  
 Ø 100–200  
 8–75 dm³/s  
 Surface mounting



**LINO**  
 Ø 100–125  
 5–23 dm³/s  
 Surface mounting



**LINO-W**  
 Ø 100–125  
 5–20 dm³/s  
 Surface mounting  
 Broad throw pattern



**OKE**  
 Ø 100–160  
 8–50 dm³/s  
 Surface mounting  
 on wall



**OKA**  
 Ø 100–200  
 5–50 dm³/s  
 Surface mounting  
 on ceiling



**RONDO**  
 Swirl  
 Ø 125  
 5–20 dm³/s  
 Surface mounting  
 on ceiling



**OKA-S**  
 Ø 100–125  
 5–18 dm³/s  
 For saunas

## SUPPLY AIR DIFFUSERS

## Visible installation



**NOP**  
 Ø 125–315  
 20–205 dm³/s



**NOT**  
 Ø 125–315  
 20–205 dm³/s



**NOX**  
 Ø 125–315  
 20–250 dm³/s



**NOP-S**  
 Ø 125–315  
 20–205 dm³/s



**NOT-S**  
 Ø 125–315  
 20–205 dm³/s



**NOX-S**  
 Ø 125–315  
 20–205 dm³/s



**RIX**  
 Ø 250–400  
 100–400 dm³/s



**RUX**  
 Ø 160–400  
 40–360 dm³/s



**TINO-S**  
 255–800 x 150–250  
 20–142 dm³/s  
 For renovation sites



**RIL**  
 Ø 160–200  
 40–110 dm³/s



**RAL**  
 Ø 100–400  
 10–270 dm³/s



**REL**  
 Ø 100–315  
 10–110 dm³/s



**RINO-V**  
 Ø 125–160  
 7–35 dm³/s

## Supply air diffusers for suspended ceilings

## Directable Nozzles



**OLO**  
 Ø 125–315  
 400x400/600x600  
 25–140 dm³/s  
 Horizontally adjustable



**OLE**  
 Ø 125–315  
 400x400/600x600  
 15–120 dm³/s  
 Horizontally adjustable



**MAP**  
 Ø 125–250  
 15–90 dm³/s  
 Horizontally adjustable



**MAK**  
 Ø 125–250  
 15–100 dm³/s  
 Horizontally adjustable

## Horizontal supply



**REK**  
 Ø 100–315  
 10–200 dm³/s  
 Horizontally adjustable



**LEK**  
 Ø 100–315  
 10–200 dm³/s  
 Horizontally adjustable



**ROK**  
 Ø 100–315  
 10–200 dm³/s



**LOK**  
 Ø 100–315  
 10–200 dm³/s

## Twist supply



**ILO**  
 Ø 125–315  
 400x400/600x600  
 15–140 dm³/s  
 Horizontally adjustable



**TOF**  
 Ø 100–315  
 5–140 dm³/s  
 Horizontally adjustable



**RONDO**  
 Swirl  
 Ø 125  
 5–20 dm³/s  
 Surface mounting  
 on ceiling



**RIF and RIF-M**  
 Ø 250–500  
 100–700 dm³/s  
 With RIF-M actuator

## Nozzle ducts



**ROL**  
 Ø 125–500  
 30–350 dm³/s  
 Active unit



**ROL-S**  
 Ø 160–315  
 30–220 dm³/s  
 Attenuation and  
 adjustment unit



**ROL-O**  
 Ø 125–500  
 Joint duct

## Wall installation



**MIS**  
 Ø 100–200  
 8–75 dm³/s  
 With balancing  
 plenum box and  
 directable nozzles



**MIK**  
 Ø 100–200  
 10–90 dm³/s  
 With balancing  
 plenum box and  
 directable nozzles



**RAN**  
 Ø 100–200  
 10–90 dm³/s  
 With balancing  
 plenum box



**RON**  
 Ø 100–200  
 10–90 dm³/s  
 With balancing  
 plenum box

## Industrial diffusers



**SAS**  
 Ø 100–250  
 5–100 dm³/s



**SES**  
 Ø 100–250  
 5–100 dm³/s



**RJA**  
 Ø 200–500  
 40–650 dm³/s



**RJZ**  
 Ø 80–400  
 5–450 dm³/s

## Ceiling installation

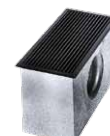


**RATT**  
 Ø 100–250  
 15–220 dm³/s



**RITT**  
 Ø 100–250  
 15–220 dm³/s

## Floor installation



**RCG**  
 Ø 100–160  
 5–25 dm³/s



**RCF**  
 Displacement device  
 Ø 100  
 8–12 dm³/s

## Exhaust nozzles



**UPA**  
 Ø 125–200  
 50–120 dm³/s  
 Exhaust nozzle



**UPSI**  
 Ø 125/160 / 160/200  
 Exhaust/intake unit

## Balancing plenum and dampening boxes



**TAK**  
 Balancing plenum box  
 Duct joint Ø 100–315  
 Accuracy class 1 ( $\pm 5\%$ )



**VAL**  
 Plenum box  
 Ø 100–315



**VAM**  
 Plenum box  
 Ø 100–250



## EXHAUST AIR DEVICES



**PINOCr**  
Ø 100–160  
5–40 dm³/s  
Surface mounting



**PINOCq**  
Ø 100–160  
5–40 dm³/s  
Surface mounting



**PINODr**  
Ø 100–160  
5–40 dm³/s  
Surface mounting



**PINODq**  
Ø 100–160  
5–40 dm³/s  
Surface mounting



**RETRO**  
Ø 125  
5–20 dm³/s  
Surface mounting



**TINOi**  
Ø 100–160  
5–40 dm³/s  
Surface mounting



**SAT**  
Ø 100–400  
5–300 dm³/s



**SET**  
Ø 100–400  
5–300 dm³/s



**SAM-P**  
Ø 125–160  
5–42 dm³/s  
Throttle



**VIP**  
Ø 100–160  
Exhaust air vent



**VIP-S**  
Ø 100–125  
Exhaust air vent  
for saunas



**OLOi**  
Ø 125–315  
Ø 400x400/600x600  
10–140 dm³/s  
Horizontally adjustable

## DISPLACEMENT DEVICES



**DINO-A**  
Ø 160–500  
300x60, 400x100  
700x150, 1000x200  
36–960 dm³/s



**DINO-K**  
Ø 125–400  
26–720 dm³/s



**DINO-R**  
Ø 125–400  
26–580 dm³/s



**DINO-T**  
Ø 125–400  
60–720 dm³/s

## TRANSFER AIR UNITS



**KIK**  
Ø 100–200  
10–50 dm³/s



**KIP**  
125 x 600/800/1000  
10–60 dm³/s

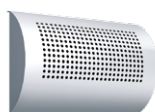


**KIO**  
300x100–100x200  
10–150 dm³/s

## FORCED-AIR HEATING



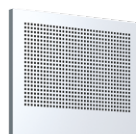
**ECO1**  
Ø 125  
5–15 dm³/s  
230 V  
Surface mounting  
on wall



**ECO2**  
Ø 125  
5–15 dm³/s  
230 V  
Surface mounting  
on wall



**ECO3**  
Ø 125  
5–16 dm³/s  
230 V  
Surface mounting  
on ceiling



**ECO4**  
Ø 125  
5–16 dm³/s  
230 V  
Flush mounting on wall



**ECOT**  
Control unit with  
display

## Dampers



**SAM**  
Ø 100–500

## SUPPLY AND EXHAUST AIR GRILLES



**EKE**  
200x100–1200x400



**EKR**  
200x100–1200x400



**EKV**  
200x100–1200x400



**EKO**  
200x100–1200x400



**ELO**  
200x100–1200x400



**RAM**  
600–1800 mm

VENTILATION SOLUTIONS FOR PROFESSIONAL KITCHENS

Hoods

CleanMaster® hoods



Wall installation



Island installation

Equipped with second-generation CleanMaster® cleaning system. Standard models with supply air and capture air, also available with only exhaust air.

Standard Plus hoods



Wall installation



Island installation

Standard models with supply air and capture air, also available with only exhaust air and condensate model.

CleanMaster® RetroFit

The new generation retrofit CleanMaster® system.



Ceiling ventilation solutions

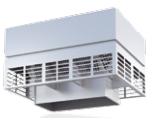
CleanMaster® and Standard Plus models. Available with supply air, capture air, exhaust air and attenuation units.



ROOF HOODS AND SNOW COVERS



**OTSU**  
For circular ducts  
Ø 125–1250



**KONTIO**  
For rectangular ducts  
800x300–1800x1000



**SISU**  
For circular ducts  
Ø 125–1250



**URHO**  
For rectangular ducts  
800x300–1800x1000

S – Intake units  
U – Exhaust air units

Snow and rain covers



**TUISKU-P/V**  
P – vertical vanes  
V – horizontal vanes  
Surface mounting



**TUISKU-PS/Vs**  
P – vertical vanes  
V – horizontal vanes  
Vaness on both sides

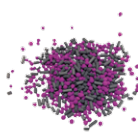


**TUISKU-PU/VU**  
P – vertical vanes  
V – horizontal vanes  
Flush mounting

AIR PURIFICATION UNITS



**PSA**  
Air purification units for removing dust, gases and microbes from the air



**CP SELECT**



### Supply and exhaust air diffusers for residential ventilation

Climecon's wide product range provides you with the most elegant **supply and exhaust air diffusers** on the market.

The range includes contemporary, high-quality supply and exhaust air diffusers to be mounted on wall or ceiling and modern ventilation diffusers designed specifically for saunas.

Our selection also includes the **ECO forced-air heaters** designed for the ventilation and heating of passive buildings and 0-energy buildings. The products of the ECO series can be used to determine the exact room-specific settings for heating thanks to which high levels of thermal comfort can be achieved.

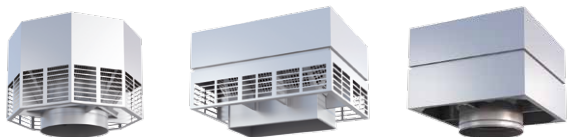


### Ventilation solutions for professional kitchens

Climecon's new **solutions for professional kitchens** are designed to meet the requirements of the modern kitchens based on hygiene, usability and energy efficiency – without forgetting the stylish design!

**The new hood and ceiling ventilation solutions** are designed to various kind of professional kitchens and the same top notch qualities are now available for small professional kitchens and for the larger industrial kitchens.

Our solutions are adaptable in different sized spaces which makes also reorganization of the kitchen easy!



### Roof hoods

Climecon's roof hoods have been carefully studied and tested.

The operation of our products for **exhaust air removal** is based on high ventilation speed, high separation rate and rigid structure.

In addition to high separation rate, **our rooftop intake units**, in turn, feature low level pressure drops and a uniform appearance with rooftop exhaust units.

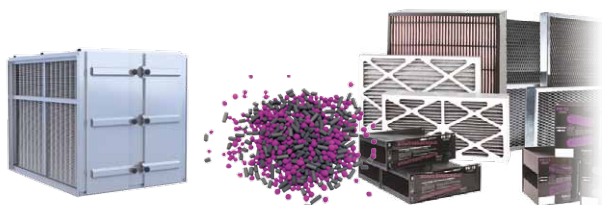
Our high quality product range also includes **wall-mounted snow and rain covers**.



### Supply and exhaust air diffusers

Climecon's wide product range offers high-quality elegant **diffusers for a wide range of different spaces and buildings**. You will find the right solution from our selection whether it will be for a school, swimming hall, shopping centre, or a small-sized office space or retail store.

In addition to the products' appearance and the technical features, the design of our products takes into account their installability, adaptability, and easy maintenance throughout their life cycle.



### Air purification solutions

Climecon offers industry-leading solutions for indoor air purification, odour removal, and protection of electronics, electrical equipment and valuables.

Our comprehensive selection of air purifiers includes **chemical air purifier units** that remove dust, odours, gases and microbes from supply air as well as from centralized return air and recirculated air.

Chemical air purification can be used, for example, to effectively remove odours—thanks to this ambient air quality can be maintained comfortable and healthy.



**Climecon Oy** is a growing Finnish building services company that develops, designs and manufactures high-quality ventilation solutions. Its product range includes supply air diffusers, hoods for professional kitchens, rooftop ventilation systems, and chemical air purification solutions that it delivers to dwellings, schools, commercial facilities, and industrial premises.

Quality, design, domestic origin, and product life cycle are the key to Climecon's design, development and manufacture. The company's products have gained popularity among professionals as a result of research and development work with industry leaders.

The company's main market areas are Finland, Sweden, Norway, UK, Germany, Belgium, Estonia, Latvia, France, and Austria. The company has 50 employees, majority of whom works in Climecon's factories in Kausala and Pihtipudas. Head office is located in Helsinki. Around 5% of the company's net sales is used for research and development.



#### **Climecon**

Lämmittäjänkatu 4 A

FI-00880 HELSINKI

Telephone +358 20 198 6600

Telefax +358 20 198 6609

[www.climecon.fi](http://www.climecon.fi)